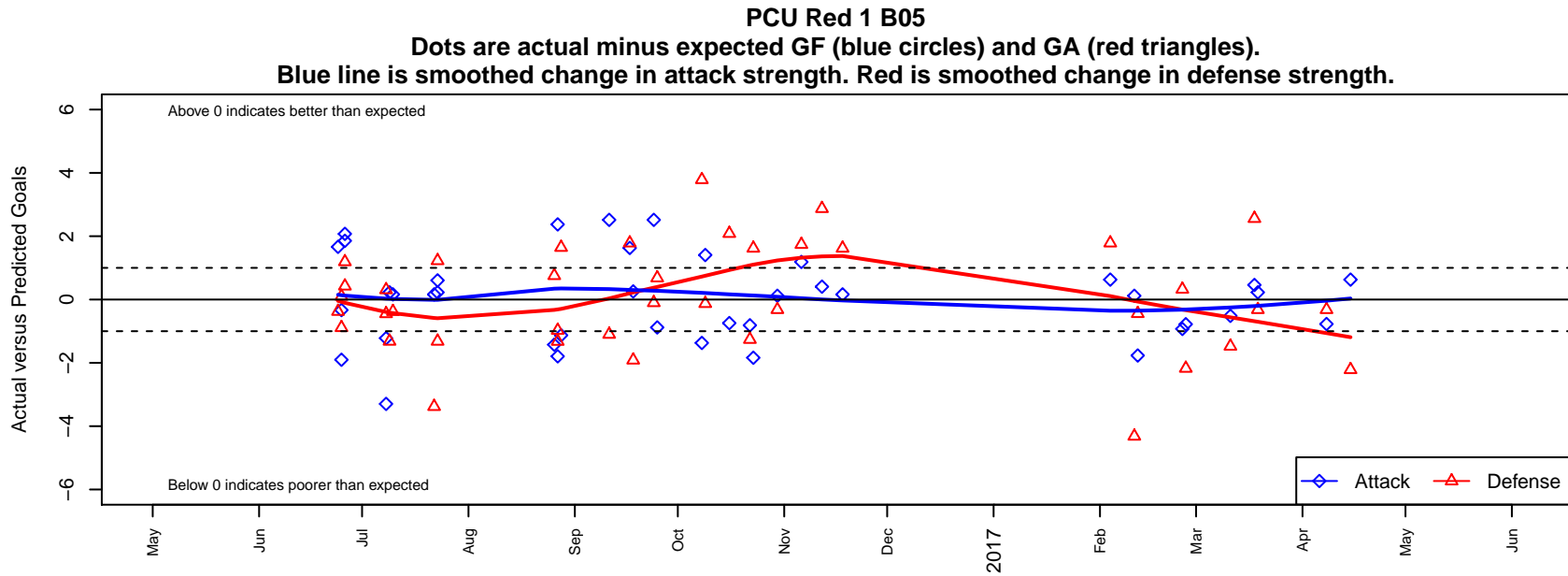


# PCU Red 1 B05

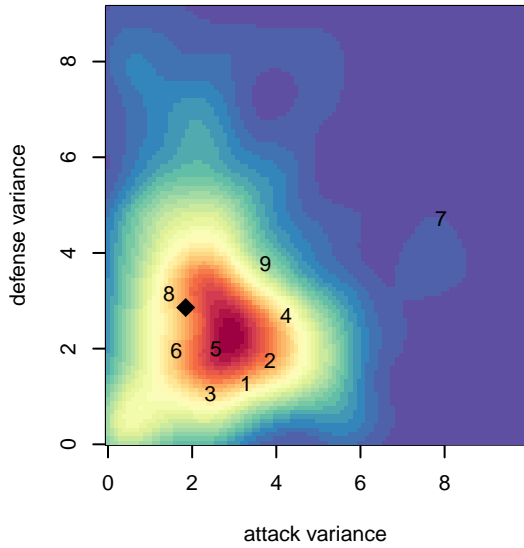
Portland City United SC  
 Portland, OR  
 B05 total strength=794  
 attack=1.52 defense=0.63  
 fall league = PTT B05 Premier White  
 spr league = Spr OYS B05 Premier Green

alt names used:  
 PCU B05 Red  
 PCU 05B Red  
 PORTLAND CITY UNITED PCU B05 RED (OR  
 PORTLAND CITY UNITEDPCU B05 RED  
 PCU 05B Red 1  
 PCU 05B Red 1  
 PCU 05B Red 1

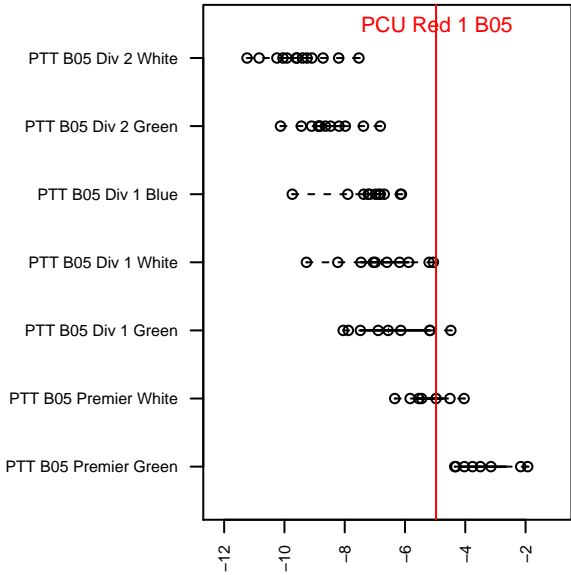
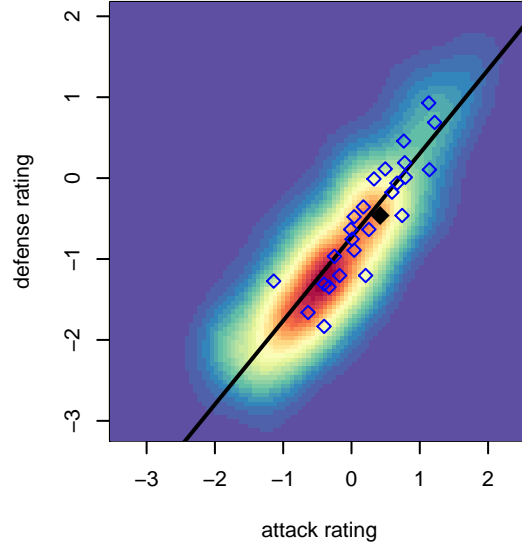
Venues played:  
 2016 Clash At the Border Silver/Bronze U12  
 2016 PCU Summer Classic U12 Gold  
 2016 Oswego Nike Cup Gold U12  
 2016 Chinook Cup Gold U12  
 2016 PTT B05 Premier White  
 2016 Spr OYS B05 Premier Green  
 2016 OYS State Cup B05



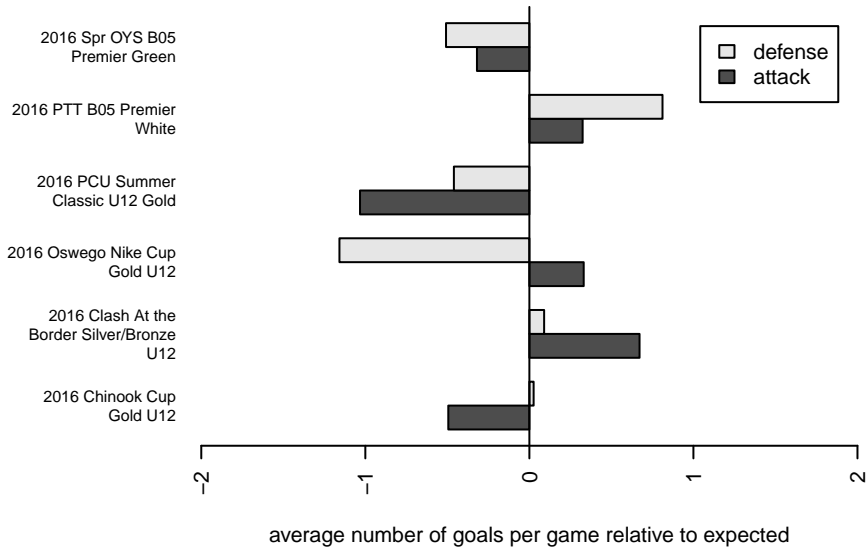
**attack and defense variance (black dot)  
relative to other teams  
and top 10 in region**



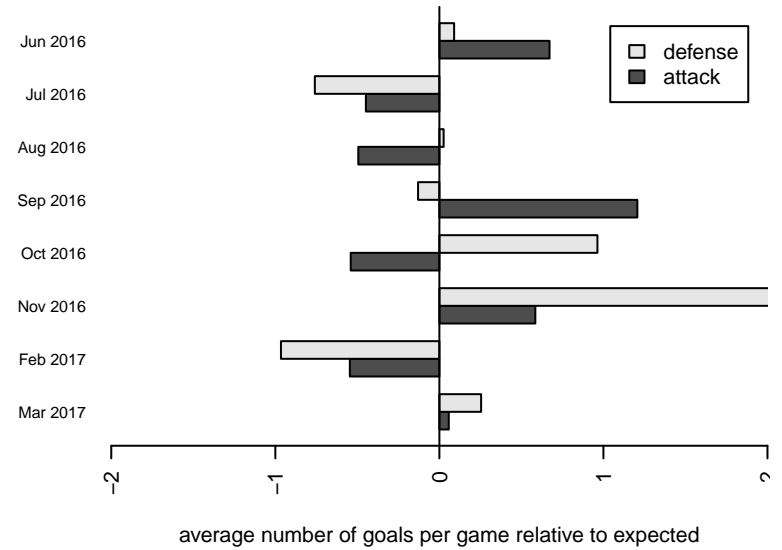
**attack and defense rating  
relative to others at age  
and all opponents in last 13 months**



**Performance relative to 13 month average**



**Performance relative to 13 month average**



| <b>date</b> | <b>home</b>                  |   | <b>away</b>                  |   | <b>venue</b>                   | <b>pred.home</b> | <b>pred.away</b> |
|-------------|------------------------------|---|------------------------------|---|--------------------------------|------------------|------------------|
| 2017-04-15  | Washington Timbers Red 1 B05 | 7 | PCU Red 1 B05                | 2 | 2016 OYS State Cup B05         | 4.78             | 1.37             |
| 2017-04-08  | PCU Red 1 B05                | 0 | FC Portland Navy B05         | 5 | 2016 OYS State Cup B05         | 0.77             | 4.68             |
| 2017-03-19  | PCU Red 1 B05                | 1 | FC Portland Navy B05         | 5 | 2016 Spr OYS B05 Premier Green | 0.77             | 4.68             |
| 2017-03-18  | Bend FC Timbers Red B05      | 0 | PCU Red 1 B05                | 2 | 2016 Spr OYS B05 Premier Green | 2.56             | 1.54             |
| 2017-03-11  | PCU Red 1 B05                | 1 | LASC IFC Eagles B05          | 5 | 2016 Spr OYS B05 Premier Green | 1.51             | 3.52             |
| 2017-02-26  | PCU Red 1 B05                | 0 | Westside Timbers Copa B05    | 7 | 2016 Spr OYS B05 Premier Green | 0.78             | 4.83             |
| 2017-02-25  | Academia de Futebol ADF B05  | 3 | PCU Red 1 B05                | 0 | 2016 Spr OYS B05 Premier Green | 3.32             | 0.93             |
| 2017-02-12  | ETFC Marseille Black B05     | 3 | PCU Red 1 B05                | 0 | 2016 Spr OYS B05 Premier Green | 2.56             | 1.77             |
| 2017-02-11  | PCU Red 1 B05                | 2 | Capital FC Timbers Red B05   | 7 | 2016 Spr OYS B05 Premier Green | 1.88             | 2.68             |
| 2017-02-04  | Washington Timbers Red 1 B05 | 3 | PCU Red 1 B05                | 2 | 2016 Spr OYS B05 Premier Green | 4.78             | 1.37             |
| 2016-11-18  | PCU Red 1 B05                | 3 | NEU White B05                | 0 | 2016 PTT B05 Premier White     | 2.84             | 1.62             |
| 2016-11-12  | RVSC Timbers Red B05         | 0 | PCU Red 1 B05                | 3 | 2016 PTT B05 Premier White     | 2.87             | 2.59             |
| 2016-11-06  | PCU Red 1 B05                | 4 | CSC Storm Navy B05           | 0 | 2016 PTT B05 Premier White     | 2.81             | 1.74             |
| 2016-10-30  | Capital FC Timbers Red B05   | 3 | PCU Red 1 B05                | 2 | 2016 PTT B05 Premier White     | 2.68             | 1.88             |
| 2016-10-23  | NEU White B05                | 0 | PCU Red 1 B05                | 1 | 2016 PTT B05 Premier White     | 1.62             | 2.84             |
| 2016-10-22  | PCU Red 1 B05                | 2 | CSC Storm Navy B05           | 3 | 2016 PTT B05 Premier White     | 2.81             | 1.74             |
| 2016-10-16  | PCU Red 1 B05                | 2 | LYS Red B05                  | 0 | 2016 PTT B05 Premier White     | 2.74             | 2.09             |
| 2016-10-09  | PCU Red 1 B05                | 4 | RVSC Timbers Red B05         | 3 | 2016 PTT B05 Premier White     | 2.59             | 2.87             |
| 2016-10-08  | PCU Red 1 B05                | 0 | Washington Timbers Red 1 B05 | 1 | 2016 PTT B05 Premier White     | 1.37             | 4.78             |
| 2016-09-25  | PCU Red 1 B05                | 1 | Capital FC Timbers Red B05   | 2 | 2016 PTT B05 Premier White     | 1.88             | 2.68             |
| 2016-09-24  | 4-H Arsenal B05              | 2 | PCU Red 1 B05                | 8 | 2016 PTT B05 Premier White     | 1.90             | 5.48             |
| 2016-09-18  | LYS Red B05                  | 4 | PCU Red 1 B05                | 3 | 2016 PTT B05 Premier White     | 2.09             | 2.74             |
| 2016-09-17  | Washington Timbers Red 1 B05 | 3 | PCU Red 1 B05                | 3 | 2016 PTT B05 Premier White     | 4.78             | 1.37             |
| 2016-09-11  | PCU Red 1 B05                | 8 | 4-H Arsenal B05              | 3 | 2016 PTT B05 Premier White     | 5.48             | 1.90             |
| 2016-08-28  | LASC Cuervos B05             | 1 | PCU Red 1 B05                | 0 | 2016 Chinook Cup Gold U12      | 2.64             | 1.13             |
| 2016-08-27  | PCU Red 1 B05                | 5 | Southside SC Azul B05        | 3 | 2016 Chinook Cup Gold U12      | 2.63             | 2.03             |
| 2016-08-27  | Westside Timbers Samba B05   | 3 | PCU Red 1 B05                | 2 | 2016 Chinook Cup Gold U12      | 1.68             | 3.79             |
| 2016-08-26  | PCU Red 1 B05                | 7 | THUSC Krypton Black B05      | 0 | 2016 Chinook Cup Gold U12      | 8.43             | 0.75             |

| <b>date</b> | <b>home</b>                  |   | <b>away</b>                    |   | <b>venue</b>                             | <b>pred.home</b> | <b>pred.away</b> |
|-------------|------------------------------|---|--------------------------------|---|--|------------------|------------------|
| 2016-07-23  | PCU Red 1 B05                | 2 | Crossfire Oregon Green I B05   | 3 | 2016 Oswego Nike Cup Gold U12            | 1.40             | 4.23             |
| 2016-07-23  | FC Portland Navy B05         | 6 | PCU Red 1 B05                  | 1 | 2016 Oswego Nike Cup Gold U12            | 4.68             | 0.77             |
| 2016-07-22  | PCU Red 1 B05                | 3 | NEU White B05                  | 5 | 2016 Oswego Nike Cup Gold U12            | 2.84             | 1.62             |
| 2016-07-10  | NEU White B05                | 2 | PCU Red 1 B05                  | 3 | 2016 PCU Summer Classic U12 Gold         | 1.62             | 2.84             |
| 2016-07-09  | FC Portland Navy B05         | 6 | PCU Red 1 B05                  | 1 | 2016 PCU Summer Classic U12 Gold         | 4.68             | 0.77             |
| 2016-07-08  | Pacific FC Rangers B05       | 1 | PCU Red 1 B05                  | 2 | 2016 PCU Summer Classic U12 Gold         | 1.31             | 5.30             |
| 2016-07-08  | 4-H Morelia B05              | 2 | PCU Red 1 B05                  | 2 | 2016 PCU Summer Classic U12 Gold         | 1.55             | 3.22             |
| 2016-06-26  | ISC Gunners B B05            | 0 | PCU Red 1 B05                  | 6 | 2016 Clash At the Border Silver/Bronze U | 1.19             | 4.15             |
| 2016-06-26  | LOSC Green I B05             | 1 | PCU Red 1 B05                  | 7 | 2016 Clash At the Border Silver/Bronze U | 1.42             | 4.93             |
| 2016-06-25  | Westside Timbers Copa TS B05 | 2 | PCU Red 1 B05                  | 4 | 2016 Clash At the Border Silver/Bronze U | 1.11             | 5.90             |
| 2016-06-25  | PCU Red 1 B05                | 8 | Timber Barons B05              | 1 | 2016 Clash At the Border Silver/Bronze U | 8.33             | 1.10             |
| 2016-06-24  | PCU Red 1 B05                | 7 | Washington Timbers White 2 B05 | 1 | 2016 Clash At the Border Silver/Bronze U | 5.34             | 0.62             |